



**IKALL/METAL**

**MODULAR ENTRANCE PANEL IKALL METAL**



Designed and manufactured to withstand the most demanding and strenuous operating conditions, in terms of urban scenarios as well as climate and temperature characteristics. Also easily resists the problems caused by extreme temperature fluctuations, provides an excellent watertight seal and is not affected by saline mist. Ikall Metal automatically adjusts the tone of any incoming voice to guarantee clean and faithful audio reception. It communicates with the user by means of clear, simple and intuitive visual indications: the OSD (On Screen Display) even conveys messages in the form of simple pictograms. Available as a digital version featuring “Sensitive Touch” technology or as an analogue version. The product is certified as IP54.



## IKALL/METAL

### MODULAR ENTRANCE PANEL IKALL METAL

#### GENERAL DATA

Type	Modular
Material	Aluminium alloy
Flush-mounted	Yes, with a dedicated accessory
Wall-mounted	Yes, with a dedicated accessory

#### COMPATIBLE SYSTEMS

Compatible audio and audio/video units	Art.1682, Art.1682HVC, Art.4682HD, Art.4682HC, Art.1621, Art.1622, Art.1622VC, Art.4680C, 4680CW
Audio/video Simplebus 2 with power supply art. 4888C	Yes
Audio/video Simplebus 2 with power supply art. 1210/1210A	Yes
Simplebus 2 audio/video kit with power supply art. 1209	Yes
Audio Simplebus 2 with power supply art. 1210/1210A	Yes
Audio/video Simplebus 1	Yes
Audio Simplebus 1	Yes
ViP	Yes

#### HARDWARE FEATURES

Call type	Push-buttons, Digital
Type of buttons	Mechanical
Number of push-buttons (n°)	100
Backlight colour	White, Blue, Off

#### ENVIRONMENTAL AND COMPLIANCE FEATURES

IP protection degree	IP54
Operating temperature (°C)	-25 ÷ 55
Operating humidity (RH max - %) (%)	25 ÷ 95
Environmental class	III

**IKALL/METAL****MODULAR ENTRANCE PANEL IKALL METAL****ACCESSORIES****3332M****Ikall Metal series audio induction loop module**

Ikall module with coil, compatible with hearing aid devices (T position). Dimensions: 112x89.5x40mm.

**4682HD****HD AUDIO/VIDEO UNIT IP (ViP)**

ViP system audio-video unit with terminal block, complete with colour camera. Resolution 1280x720 pixels. Recording angle 110° (H) - 80° (V). IR led camera lighting. Complete with terminal block and digital audio management system with Echo-cancelling, watertight loudspeaker and electrets microphone; loudspeaker volume can be adjusted from the front. Programmable audio visual functions for users with disabilities. Standard POE audio-video unit, but if necessary 33 VDC power supply can be used the power supply unit art. 1595. Compatible with H.264 video format. Dimensions: 102x55x38 mm.

**3348BM****ELECTRONIC KEY MODULE, IKALL METAL SERIES**

Digital electronic key module with LED keypad backlighting. Blue, white and off lighting options; stainless steel finish. When a number with between 1 and 8 digits is entered on the keypad, two relays (10A) are activated, allowing the operation of electric door locks or other devices. Dimensions 112x89.5x40 mm.

**IKALL/METAL****MODULAR ENTRANCE PANEL IKALL METAL****ACCESSORIES****3360BM 2-WIRE AND VIP CALL MODULE. IKALL METAL**

Digital call module with 128x64 dot graphic LCD display and keypad with 21 buttons backlit with blue LEDs. Also functions as an electronic key code. Two search buttons are used to scroll through the names; alternatively, the first letter of the required name can be entered. Once the desired username is displayed, simply press the call button. The call can also be made by directly entering the user code. It can also be used to customise an initial welcome message and can operate with a dual user interface language. It can be used in conjunction with Simplekey electronic keys for automatic updating of names in the directory. For the SBC system (factory setting), the electronic name directory saves up to 3500 user names and 6000 lock-release passwords. Users and settings are simple to program using PC software art. 1249B (included, with USB connection cable) via a USB or RS485 port, or locally on the digital module itself. Includes the CD-ROM loaded with serial download SW art. 1249B for installation to PC and the USB connection cable. Dimensions: 112x180x40

**1621 Simplebus 2W audio unit with LED, Ikall series**

Speaker unit for 2-wire systems complete with terminal block and audio control with echo-cancelling, sealed-unit loudspeaker, electret microphone and front-mounted loudspeaker volume control. Complete with microprocessor and 8-position dip switch for programming calls to users. On-board electronic lock-release function (3A) plus C, NC, NO contacts for 10A relay. Timed lock-release input and door open indication. Compatible with power supply unit art. 1210. Dimensions: 102x55x38 mm.

**IKALL/METAL****MODULAR ENTRANCE PANEL IKALL METAL****ACCESSORIES****4681****2 WIRES AUDIO/VIDEO UNIT**

Colour audio-video unit for 2-wire systems with terminal block complete with directable colour camera with front adjustment, LED camera lighting. Complete with terminal block and audio control with echo-cancelling, sealed-unit loudspeaker, electret microphone and front-mounted loudspeaker volume control. Complete with microprocessor and 8-position dip switch for programming calls to users. Programmable audiovisual functions for users with disabilities. On-board electronic lock-release function (3A) plus C, NC, NO contacts for 10A relay. Timed lock-release input and door open indication. Compatible with power supply unit art. 1210. Dimensions: 102x55x38 mm.

**1621VC****2 WIRES IKALL AUDIO UNIT FOR REMOTE CAMERA**

Speaker unit for 2-wire systems complete with terminal block and audio control with echo-cancelling, sealed-unit loudspeaker, electret microphone and front-mounted loudspeaker volume control. Allows use of external PAL colour cameras. Complete with microprocessor and 8-position dip switch for programming calls to users. On-board electronic lock-release function (3A) plus C, NC, NO contacts for 10A relay. Timed lock-release input and door open indication. Compatible with power supply unit art. 1210. Dimensions: 102x55x38 mm.

**4682HC****COL.AUD/VID UNIT FOR VIP SYST., IKALL SERIES.H264**

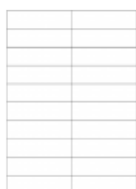
Audio-video unit for ViP system including terminal block complete with front-adjustable mini lens colour camera, LED camera lighting. Complete with terminal block and digital audio management system with Eco-cancelling, watertight loudspeaker and electret microphone, loudspeaker volume adjustable from the front. For fitting in modules: art. 33410, 33411 and 33412. Dimensions: 102x55x38 mm.

**IKALL/METAL****MODULAR ENTRANCE PANEL IKALL METAL****ACCESSORIES****1682HVC IKALL SERIES AUDIO MOD. FOR REM.COL.CAM. VIP. H264**

ViP system audio unit with facility for connection of a remote camera with 12Vdc power supply. Complete with terminal block and digital audio management system with Echo-cancelling, watertight loudspeaker and electret microphone, loudspeaker volume adjustable from the front. Dimensions: 102x55x38 mm. Compatible with H.264 video format.

**1235A NAMEPLATE LABEL PRINTING SOFTWARE**

Dedicated software for the creation and printing of nameplate and information labels for Ikall, Vandalcom, Quadra and 316 Analog entrance panels. Requires use of adhesive labels art.1217, 1218, 1219 or art.1220. This software is available to download free of charge from the Comelit website

**1218 NAME TAG SHEETS FOR IKALL ENTRANCE PANEL**

The kit contains 10 sheets of adhesive labels for single nameplates, 7 sheets for double nameplates and 3 sheet for information modules.

**1682 IKALL VIP AUDIO ONLY SPEAKER**

Audio unit for ViP system. Complete with terminal block and digital audio management system with Echo-cancelling, watertight loudspeaker and electret microphone, loudspeaker volume adjustable from the front. For fitting in modules: part. 33400, 33401, 33402. Dimensions: 102x55x38 mm.

**IKALL/METAL****MODULAR ENTRANCE PANEL IKALL METAL****ACCESSORIES****4680CW D&N WIDE COLOUR A/V UNIT. IKALL SERIES SIMPLEBUS**

Audio/video unit with terminal block, Simplebus 2 system, complete with colour camera with 2.3 mm lens and IR illumination. Digital audio management system with Echo-cancelling, watertight loudspeaker and electret microphone, loudspeaker volume can be adjusted from the front. Complete with microprocessor and dip-switch with 8 positions for programming calls to users. Programmable audiovisual indications to comply with DDA. 33 VDC power supply via power supply unit part. 1595. On-board electronic lock-release function (3A), plus C-NC-NO 10A relay contacts. Compatible with all Simplebus 2 functions and products. Allows call addressing up to 120000 users. Timed door opening and door open visualization. To add in the audio-video modules with 0, 1 and 2 buttons. Dimensions: 102x55x38 mm.

**3349M IKALL METAL SIMPLEKEY CUT-OUT**

Module set up for use with Simplekey reader Art. SK9000I. Stainless steel finish. Dimensions 112x89.5x22 mm

**33436M IKALL METAL SIMPLEBUS/VIP 6 BUTTON MODULE**

IKALL entrance panel 6-button module for Simplebus/VIP systems, with stainless steel finish. Nameplate lighting options: blue/white/off. Dimensions 112x89.5x40 mm. IKALL entrance panel 6-button module for Simplebus/VIP systems, with stainless steel finish. Nameplate lighting options: blue/white/off. Dimensions 112x89.5x40 mm.

**33434M IKALL METAL SIMPLEBUS/VIP 4 BUTTON MODULE**

IKALL entrance panel 4-button module for Simplebus/VIP systems, with stainless steel finish. Nameplate lighting options: blue/white/off. Dimensions 112x89.5x40 mm.

**IKALL/METAL****MODULAR ENTRANCE PANEL IKALL METAL****ACCESSORIES****33433M IKALL METAL SIMPLEBUS/VIP 3 BUTTON MODULE**

IKALL entrance panel 3-button module for Simplebus/VIP systems, with stainless steel finish. Nameplate lighting options: blue/white/off. Dimensions 112x89.5x40 mm.

**33412M IKALL METAL VIDEO MODULE - 2 BUTTONS**

Module designed for audio/video speaker unit, with stainless steel finish. Nameplates with LED lighting (options: blue, white or off). To be fitted with a suitable video entry speaker unit depending on the cabling system used. Dimensions 112x89.5x32 mm.

**33411M IKALL METAL VIDEO MODULE - 1 BUTTON**

Module designed for audio/video speaker unit, with stainless steel finish. Nameplates with LED lighting (options: blue, white or off). To be fitted with a suitable video entry speaker unit depending on the cabling system used. Dimensions 112x89.5x32 mm.

**33410M IKALL METAL VIDEO MODULE - 0 BUTTONS**

Module designed for audio/video speaker unit, with stainless steel finish. To be fitted with a suitable video entry speaker unit depending on the cabling system used. Dimensions 112x89.5x32 mm.

**33402M IKALL METAL AUDIO MODULE - 2 BUTTONS**

Module designed for audio speaker unit, with stainless steel finish. Nameplates with LED lighting (options: blue, white or off). To be fitted with an audio speaker unit depending on the cabling system used. Dimensions 112x89.5x32 mm.



**IKALL/METAL****MODULAR ENTRANCE PANEL IKALL METAL****ACCESSORIES****33401M IKALL METAL AUDIO MODULE - 1 BUTTON**

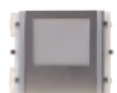
Module designed for audio speaker unit, with stainless steel finish. Nameplates with LED lighting (options: blue, white or off). To be fitted with an audio speaker unit depending on the cabling system used. Dimensions 112x89.5x32 mm.

**33400M IKALL METAL AUDIO MODULE - 0 BUTTONS**

Module designed for audio speaker unit, with stainless steel finish. To be fitted with an audio speaker unit depending on the cabling system used. Dimensions 112x89.5x32 mm.

**3339M IKALL METAL NAME PLATE**

LED-backlit module displaying a list of names or user codes (max. 12). Stainless steel finish; blue/white/off nameplate lighting options. Dimensions 112x89.5x39.

**3336M IKALL METAL INDICATOR MODULE**

LED-backlit module providing various indications, with stainless steel finish. Nameplate lighting options: blue/white/off. Dimensions 112x89.5x39.

**3334M IKALL METAL BLANK MODULE**

Blind module with stainless steel finish. Dimensions 112x89.5x22 mm.



**IKALL/METAL**

**MODULAR ENTRANCE PANEL IKALL METAL**

**ACCESSORIES**



**3311/4AL 4 MODULE SURROUND WITH ANODISED ALUMINIUM FRAME**

Made of die-cast aluminum with an anodized aluminum frame ideal for installation in extreme situations such as the marine environment, 3 modules. Dimensions 125x395x37.5mm



**3311/3AL 3 MODULE SURROUND WITH ANODISED ALUMINIUM FRAME**

Made of die-cast aluminum with an anodized aluminum frame ideal for installation in extreme situations such as the marine environment, 3 modules. Dimensions 125x305x37.5mm



**3311/2AL 2 MODULE SURROUND WITH ANODISED ALUMINIUM FRAME**

Made of die-cast aluminum with an anodized aluminum frame ideal for installation in extreme situations such as the marine environment, 2 modules. Dimensions 125x215x37.5mm



**3311/1AL 1 MODULE SURROUND WITH ANODISED ALUMINIUM FRAME**

Made of die-cast aluminum with an anodized aluminum frame ideal for installation in extreme situations such as the marine environment, 1 module. Dimensions 125x125x37.5mm



**3311/3S IKALL SERIES 3-MODULES HOLDER FRAME, SILVER FRAME**

Made of die-cast aluminium and coated with special weather-resistant paint. 3 modules. Silver colour. Dimensions 125x305x37,5 mm



**IKALL/METAL**

**MODULAR ENTRANCE PANEL IKALL METAL**

**ACCESSORIES**



**3311/2S**

**IKALL SERIES 2-MODULES HOLDER FRAME, SILVER FRAME**

Made of die-cast aluminium and coated with special weather-resistant paint. 2 modules. Silver colour. Dimensions 125x215x37,5mm



**3311/1S**

**IKALL SERIES 1-MODULE HOLDER FRAME, SILVER FRAME**

Made of die-cast aluminium and coated with special weather-resistant paint. 1 module. Silver colour. Dimensions 125x125x37,5mm



**4680C**

**2 WIRES AUDIO/VIDEO UNIT**

Simplebus 2 system audio/video unit with terminal block complete with front-adjustable wide-angle 1.3" CCD colour camera and LED camera illumination. Complete with terminal block and digital audio management system with Eco-cancelling, watertight loudspeaker and electrets microphone, loudspeaker volume can be adjusted from the front. Complete with microprocessor and DIP SWITCH with 8 positions for programming calls to users. Audiovisual indications for disabled individuals assistance request can be activated via programming. 33Vdc power supply via special power supply unit Art. 1595. On-board electronic lock-release function (3A), plus C, NC, NO contacts for 10A relay. For use in modules Art. 33410, 33411 and 33412. Dimensions: 102x55x38 mm. Compatible with all Simplebus 2 functions and products. Allows call addressing for up to 120000 users. Timed lock-release input and door open indication.



**3649/3**

**45° INCLINATION HOUSING 3 MODULES ENTRANCE PANEL**

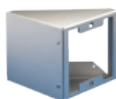
Housing made of aluminium which allows the Powercom entrance panel to be rotated by 45°. Once fitted to the wall, the housing angles the entrance panel laterally towards the user for easier and practical use. N° modules: 3. Dimensions: 183x354x100 mm.



**IKALL/METAL**

**MODULAR ENTRANCE PANEL IKALL METAL**

**ACCESSORIES**



**3649/2**

**45° INCLINATION HOUSING 2 MODULES ENTRANCE PANEL**

Housing made of aluminium which allows the Powercom entrance panel to be rotated by 45°. Once fitted to the wall, the housing angles the entrance panel laterally towards the user for easier and practical use. N° modules: 2. Dimensions: 183x242x100 mm.



**3649/1**

**45° INCLINATION HOUSING 1 MODULE ENTRANCE PANEL**

Housing made of aluminium which allows the Powercom entrance panel to be rotated by 45°. Once fitted to the wall, the housing angles the entrance panel laterally towards the user for easier and practical use. N° modules: 1. Dimensions: 183x130x100 mm.



**3640/3**

**PILLAR FOR 3-MODULES ENTRANCE PANEL, HEIGHT 117CM**

Extruded aluminium pillar with steel coloured finish, aluminium rain shield and floor-mounted base, bolts provided. 3 modules. Dimensions 118x117x7,5 cm



**3640/2**

**PILLAR FOR 2-MODULES ENTRANCE PANEL, HEIGHT 117CM**

Extruded aluminium pillar with steel coloured finish, aluminium rain shield and floor-mounted base, bolts provided. 3 modules. Dimensions 118x117x7,5 cm



**3640/1**

**PILLAR FOR 1-MODULE ENTRANCE PANEL, HEIGHT 117CM**

Extruded aluminium pillar with steel coloured finish, aluminium rain shield and floor-mounted base, bolts provided. 1 module. Dimensions 118x117x7,5 cm

**IKALL/METAL****MODULAR ENTRANCE PANEL IKALL METAL****ACCESSORIES****3639/3****PILLAR FOR 3-MODULES ENTRANCE PANEL, HEIGHT 170CM**

Extruded aluminium pillar with steel coloured finish, aluminium rain shield and floor-mounted base, bolts provided. 3 modules.  
Dimensions 118x170x7.5 cm

**3639/2****PILLAR FOR 2-MODULES ENTRANCE PANEL, HEIGHT 170CM**

Extruded aluminium pillar with steel coloured finish, aluminium rain shield and floor-mounted base, bolts provided. 2 modules.  
Dimensions 118x170x7.5 cm

**3639/1****PILLAR FOR 1-MODULE ENTRANCE PANEL, HEIGHT 170CM**

Extruded aluminium pillar with steel coloured finish, aluminium rain shield and floor-mounted base, bolts provided. 1 module.  
Dimensions 118x170x7,5 cm

**3313****VANDALPROOF SCREW KIT WITH KEY INCLUDED**

KIT containing 2 tamper-proof screws for fixing the entrance panel finishing frame in place. Installation key included.

**3311/4W****IKALL SERIES 4-MODULE HOLDER FRAME W/ WHITE FINISHING FRAME**

Made of die-cast aluminium and coated with special weather-resistant paint. 4 modules. White colour. Dimensions 125x395x37,5 mm

**3311/4S****IKALL SERIES 4-MODULES HOLDER FRAME, SILVER FRAME**

Made of die-cast aluminium and coated with special weather-resistant paint. 4 modules. Silver colour. Dimensions 125x395x37,5 mm



**IKALL/METAL**

**MODULAR ENTRANCE PANEL IKALL METAL**

**ACCESSORIES**



**3311/4A MODULE-HOLDER FRAME COMPLETE WITH FINISHING FRAME**

Made of die-cast aluminium and coated with special weather-resistant paint. 4 modules. Anthracite colour. Dimensions 125x395x37,5 mm



**3311/3W IKALL SERIES 3-MODULE HOLDER FRAME W/ WHITE FINISHING FRAME**

Made of die-cast aluminium and coated with special weather-resistant paint. 3 modules. White colour. Dimensions 125x305x37,5 mm



**3311/3A MODULE-HOLDER FRAME COMPLETE WITH FINISHING FRAME**

Made of die-cast aluminium and coated with special weather-resistant paint. 3 modules. Anthracite colour. Dimensions 125x305x37,5 mm



**3311/2W IKALL SERIES 2-MODULE HOLDER FRAME W/ WHITE FINISHING FRAME**

Made of die-cast aluminium and coated with special weather-resistant paint. 2 modules. White colour. Dimensions 125x215x37,5mm



**3311/2A MODULE-HOLDER FRAME COMPLETE WITH FINISHING FRAME**

Made of die-cast aluminium and coated with special weather-resistant paint. 2 modules. Anthracite colour. Dimensions 125x215x37,5mm



**IKALL/METAL**

**MODULAR ENTRANCE PANEL IKALL METAL**

**ACCESSORIES**



**3311/1W IKALL SERIES 1-MODULE HOLDER FRAME W/ WHITE FINISHING FRAME**

Made of die-cast aluminium and coated with special weather-resistant paint. 1 module. White colour. Dimensions 125x125x37,5mm



**3311/1A MODULE-HOLDER FRAME COMPLETE WITH FINISHING FRAME**

Made of die-cast aluminium and coated with special weather-resistant paint. 1 module. Anthracite colour. Dimensions 125x125x37,5mm



**31169 IKALL HOUSING WITH RAINSHIELD 9 MODULE**

Natural anodised aluminium housing with rain shield. 9 modules. Dimensions 408x332x85 mm



**31166 IKALL HOUSING WITH RAINSHIELD 6 MODULE**

Natural anodised aluminium housing with rain shield. 6 modules. Dimensions 281x332x44 mm



**31164L IKALL HOUSING WITH RAINSHIELD 4 MODULE**

Natural anodised aluminium housing with rain shield. 4 vertically-aligned modules. Dimensions 154x422x85 mm



**31164 IKALL HOUSING WITH RAINSHIELD 4 MODULE**

Natural anodised aluminium housing with rain shield. 4 modules. Dimensions 281x242x85 mm



**IKALL/METAL**

**MODULAR ENTRANCE PANEL IKALL METAL**

**ACCESSORIES**



**31163**

**IKALL HOUSING WITH RAINSHIELD 3 MODULE**

Natural anodised aluminium housing with rain shield. 3 modules.  
Dimensions 154x332x85 mm



**31162**

**IKALL HOUSING WITH RAINSHIELD 2 MODULE**

Natural anodised aluminium housing with rain shield. 2 modules.  
Dimensions 154x242x85 mm



**31161**

**IKALL 1 MODULE HOUSING WITH RAINSHIELD**

Natural anodised aluminium housing with rain shield. 1 module.  
Dimensions 154x152x85 mm



**31149**

**3X3 MODULES FINISHING FRAME FOR ENTRANCE PANEL**

Natural anodised aluminium finishing frame. 9 modules.  
Dimensions 403x329x3 mm



**31146**

**2X3 MODULES FINISHING FRAME FOR ENTRANCE PANEL**

Natural anodised aluminium finishing frame. 6 modules.  
Dimensions 276x329x3 mm



**31144L**

**4 MODULES FINISHING FRAME FOR ENTRANCE PANEL**

Natural anodised aluminium finishing frame. 4 vertically-aligned module. Dimensions 149x419x3 mm





**IKALL/METAL**

**MODULAR ENTRANCE PANEL IKALL METAL**

**ACCESSORIES**



**31144**

**2X2 MODULES FINISHING FRAME FOR ENTRANCE PANEL**

Natural anodised aluminium finishing frame. 4 modules.  
Dimensions 276x239x3 mm



**31143**

**3 MODULES FINISHING FRAME FOR ENTRANCE PANEL**

Natural anodised aluminium finishing frame. 3 modules.  
Dimensions 149x329x3 mm



**31142**

**2 MODULES FINISHING FRAME FOR ENTRANCE PANEL**

Natural anodised aluminium finishing frame. 2 modules.  
Dimensions 149x239x3 mm



**31141**

**1 MODULE FINISHING FRAME FOR ENTRANCE PANEL**

Natural anodised aluminium finishing frame. 1 module. Dimensions  
149x149x3 mm



**31129**

**IKALL RAIN SHIELD FOR 9 MODULES**

Natural anodised aluminium rain shield. 9 modules. Dimensions  
408x332x44 mm



**31126**

**IKALL RAIN SHIELD FOR 6 MODULES**

Natural anodised aluminium rain shield. 6 modules. Dimensions  
281x332x44 mm



**IKALL/METAL**

**MODULAR ENTRANCE PANEL IKALL METAL**

**ACCESSORIES**



**31124L**

**IKALL RAIN SHIELD FOR 4 VERTICAL MODULES**

Natural anodised aluminium rain shield. 4 vertically-aligned modules. Dimensions 154x422x44 mm



**31124**

**RAIN SHIELD FOR 4 MODULE ENTRANCE PANEL**

Natural anodised aluminium rain shield. 4 modules. Dimensions 281x242x44 mm



**31123**

**RAIN SHIELD FOR 3 MODULE ENTRANCE PANEL**

Natural anodised aluminium rain shield. 3 modules. Dimensions 154x332x44 mm



**31122**

**RAIN SHIELD FOR 2 MODULE ENTRANCE PANEL**

Natural anodised aluminium rain shield. 2 modules. Dimensions 154x242x44 mm



**31121**

**RAIN SHIELD FOR 1 MODULE ENTRANCE PANEL**

Natural anodised aluminum rain shield for 1 module Ikall panel. Dimensions 154x152x44 mm



**3110/4**

**4 MODULES FLUSH-MOUNT BOX FOR ENTRANCE PANEL**

Module-holder frame with finishing frame. 4 modules. Dimensions 118x387x45 mm



**IKALL/METAL**

**MODULAR ENTRANCE PANEL IKALL METAL**

**ACCESSORIES**



**3110/3**

**3 MODULES FLUSH-MOUNT BOX FOR ENTRANCE PANEL**

Module-holder frame with finishing frame. 3 modules. Dimensions 118x297x45 mm



**3110/2**

**2 MODULES FLUSH-MOUNT BOX FOR ENTRANCE PANEL**

Module-holder frame with finishing frame. 2 modules. Dimensions 118x207x45 mm



**3110/1**

**1 MODULE FLUSH-MOUNTED BOX FOR ENTRANCE PANEL**

Module-holder frame with finishing frame. 1 module. Dimensions 118x118x45 mm



**1622VC**

**2 WIRES IKALL AUDIO UNIT FOR REMOTE CAMERA**

Module which allows modulation and transmission of the colour video signal on the riser. On input it has the composite video signal of a colour camera. Complete with microprocessor and DIP SWITCH with 8 positions for programming calls to users. 33Vdc power supply via special power supply unit Art. 1595. On-board electronic lock-release function (3A), plus C, NC, NO contacts for 10A relay. For use in modules Art. 33400, 33401 and 33402. Dimensions: 102x55x38 mm. Compatible with all Simplebus 2 functions and products. It allows call addressing for up to 120000 users. Timed lock-release inputs and door open indication.



**IKALL/METAL**

**MODULAR ENTRANCE PANEL IKALL METAL**

**ACCESSORIES**



**1622**

**IKALL SIMPLEBUS AUDIO SPEAKER**

Audio speaker unit for Simplebus system, complete with terminal block and digital audio management system with Eco-cancelling, watertight loudspeaker and electrets microphone, loudspeaker volume can be adjusted from the front. Complete with microprocessor and DIP SWITCH with 8 positions for programming user calls. 33Vdc power supply via special power supply unit Art. 1595. On-board electronic lock-release function (3A), plus a 10A relay. For use in modules Art. 33400, 33401 and 33402. Dimensions: 102x55x38 mm. Compatible with all Simplebus 2 functions and products. It allows call addressing for up to 120000 users. Timed lock-release inputs and door open indication.



**1595**

**120-230VAC / 33VDC POWER SUPPLY UNIT**

Power supply unit with input of 120÷230VAC, 33VDC output with 500mA continuous and 1.2A inrush current for video door entry panel. Equipped with internal protection against overcurrent and short circuits. Dimensions: 71.7x90x62 mm (4 DIN modules).